

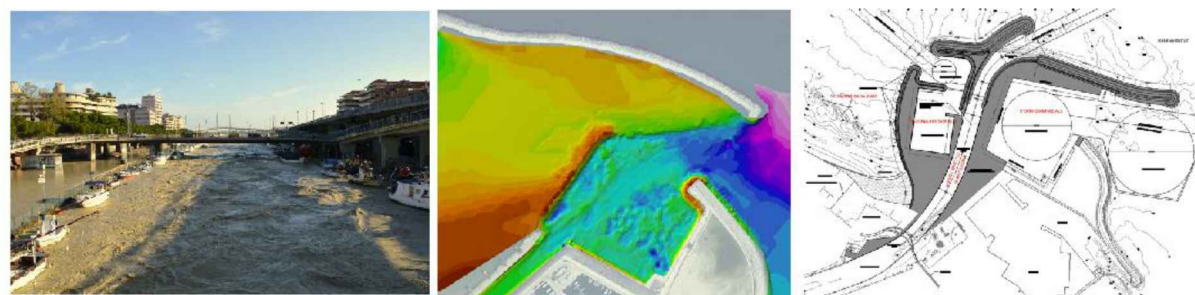


CITTÀ DI PESCARA

APPROFONDIMENTI E IMPLEMENTAZIONI DEGLI STUDI IDRAULICI E DI MORFODINAMICA FLUVIALE E COSTIERA A CORREDO DEL P.R.P. DI PESCARA

CIG 66247157C1

CUP J22I16000000001



ALL1

Relazione descrittiva delle attività
condotte e dei risultati ottenuti

ALLEGATO 1 - Rilievo topografico

Scala

varie

Progettazione

Il progettista

Il responsabile del progetto



WATER AND NATURAL
RESOURCES
CONSULTANTS

Via Guido Rossa, 29/A
35020 Ponte S. Nicolò
Padova - Italia
info@betastudio.it
www.betastudio.it
tel +390498961120
fax +390498961090

BETA Studio srl

Ing. Massimo COCCATO

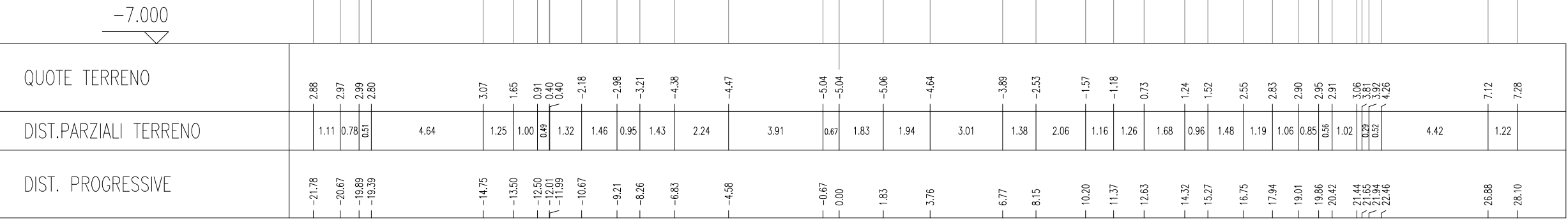


0	Prima emissione	27.06.2016	ing. F.Ramazzina	ing. F.Ramazzina	ing. M.Coccatto
rev.	motivo	data	redatto	verificato	approvato
			cod. el. 09305T01ALL1		file 09305T01ALL1_00_copertina.doc



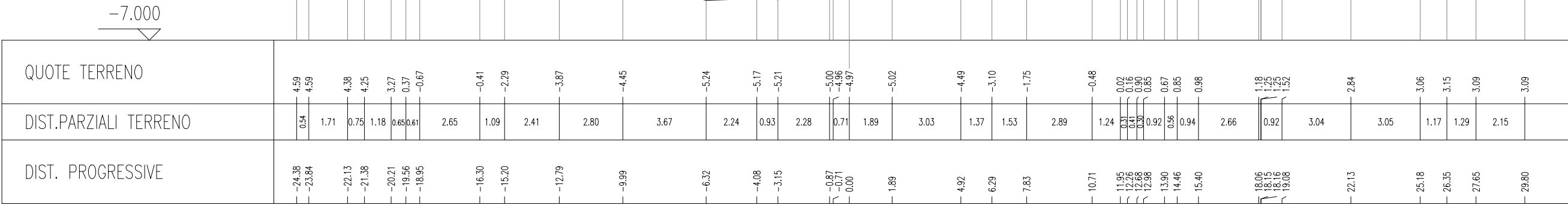
SEZIONE N. : PE0370
DIST.PROG. : 42884.547
DIST.PREC. : 957.565
DIST.SUCC. : 686.235

SCALA 1:200



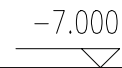
SEZIONE N. : PE0380
DIST.PROG. : 43570.782
DIST.PREC. : 686.235
DIST.SUCC. : 449.447

SCALA 1:200



SEZIONE N. : PE0390
DIST.PROG. : 44020.229
DIST.PREC. : 449.447
DIST.SUCC. : 818.950

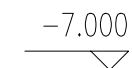
SCALA 1:200



QUOTE TERRENO	3.60	4.31	4.31	4.31	3.89	2.87	1.56	-0.85	-1.94	-2.61	-2.63	-4.64	-4.87	-5.22	-5.10	-4.86	-4.63	-3.50	-3.39	-3.37	-3.57	-1.89	-0.82	-0.09	0.08	0.30	1.55	1.69	1.80	1.92	2.21	3.25	3.39	4.41	5.17
DIST.PARZIALI TERRENO	4.16	0.99	1.99	2.31	1.33	1.20	1.78	2.21	2.26	0.53	2.54	1.67	3.61	1.79	2.56	2.66	2.03	2.25	2.84	1.73	1.36	1.83	0.56	1.30	1.25	1.08	1.03	1.71	4.03	0.75	3.79	1.03			
DIST. PROGRESSIVE	-35.61	-31.45	-30.45	-28.46	-26.16	-24.82	-23.63	-21.85	-19.64	-17.38	-16.86	-14.32	-12.65	-9.04	-7.25	-4.69	-2.03	0.00	0.20	2.45	2.68	5.51	7.24	8.60	10.43	10.99	12.29	13.54	14.62	15.65	17.36	21.39	22.13	25.92	26.96

SEZIONE N. : PE0400
DIST.PROG. : 44839.179
DIST.PREC. : 818.950
DIST.SUCC. : 510.064

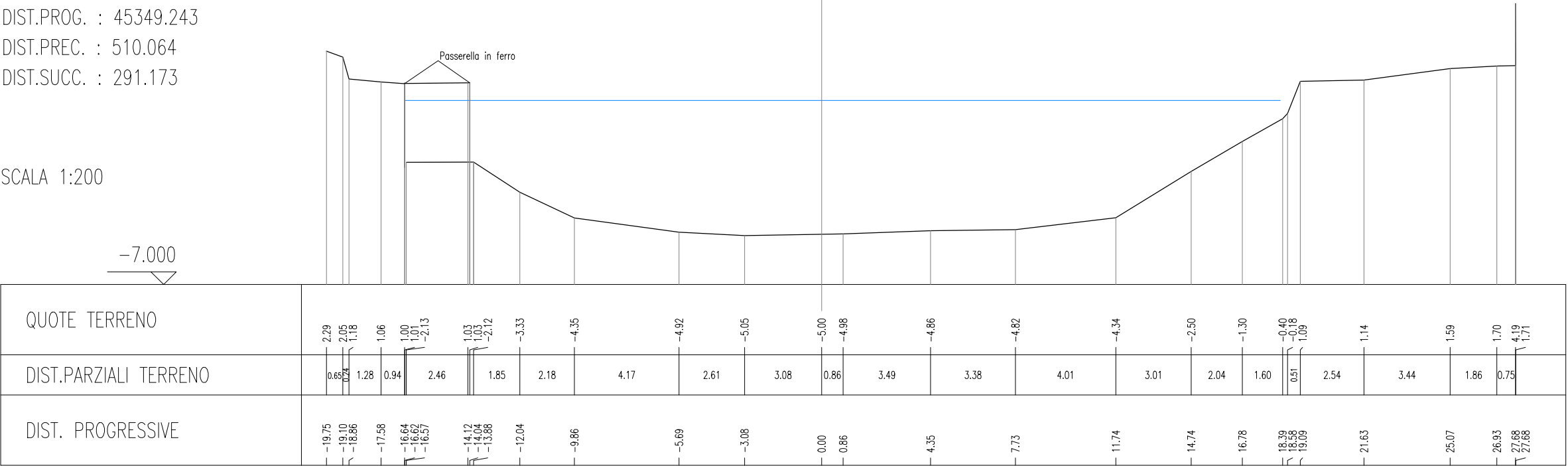
SCALA 1:200



QUOTE TERRENO	3.18 2.12 2.05		1.64	0.59	-1.02	-2.87	-2.79	-2.13	-2.43	-3.01	-3.77		-3.39 -3.40 -3.41	-3.43	-3.40	-3.36	-3.49	-3.57	-2.79	-1.31	-0.37 0.96	1.15	1.06 1.09	1.28	2.05	2.06	2.10								
DIST.PARZIALI TERRENO	1.13	4.19	2.32	1.39	1.39	1.60	1.14	2.16	3.57	4.45	4.85	0.28 0.43	1.26	3.09	3.03	3.51	2.83	2.86	1.23	0.79	0.28	1.63	1.40	0.34	2.62	0.81	1.89	3.66							
DIST. PROGRESSIVE	-28.96 -28.88 -27.75		-23.57		-21.24		-19.86	-18.47		-16.87		-15.73		-13.57		-10.00		-5.55		-0.71 -0.43 0.00	1.26		4.35	7.38	10.89	13.72	16.58	17.81	18.60 18.88	20.51	21.91 22.25	24.87	25.68	27.57	31.23

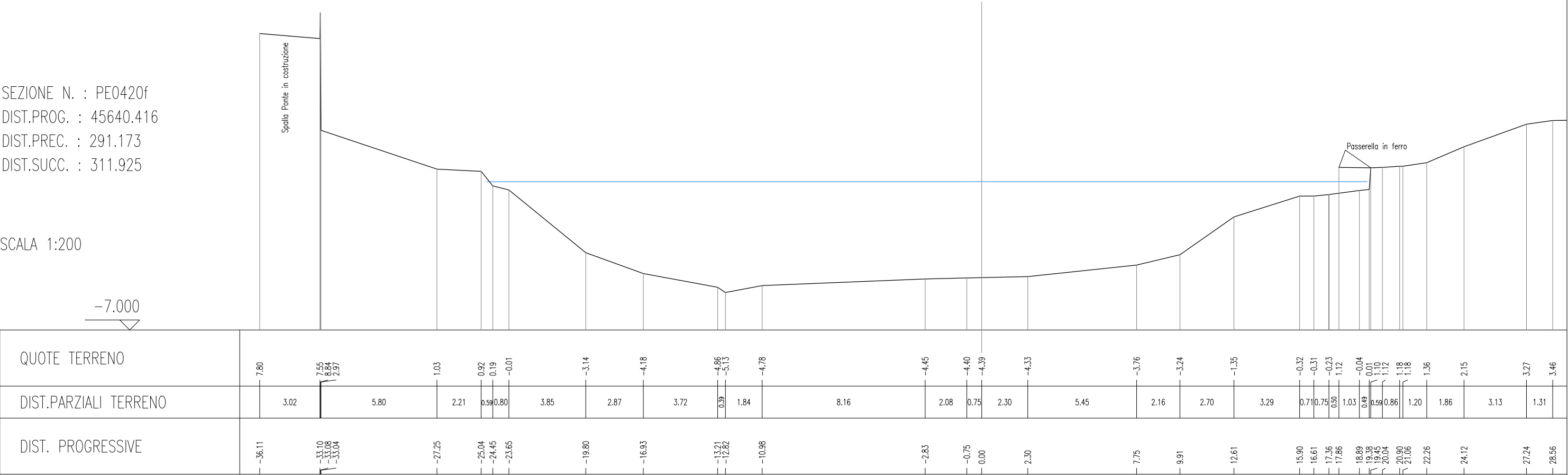
SEZIONE N. : S4
DIST.PROG. : 45349.243
DIST.PREC. : 510.064
DIST.SUCC. : 291.173

SCALA 1:200



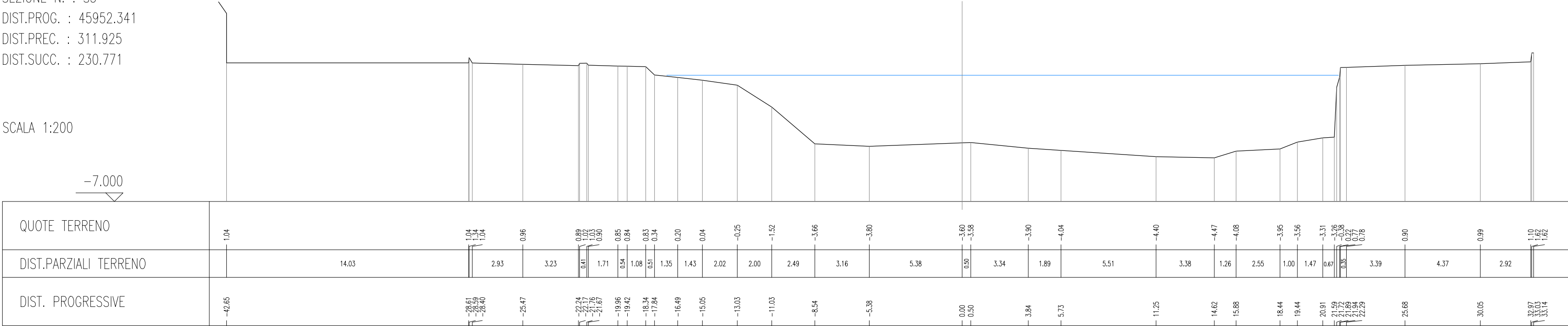
SEZIONE N. : PE0420f
DIST.PROG. : 45640.416
DIST.PREC. : 291.173
DIST.SUCC. : 311.925

SCALA 1:200



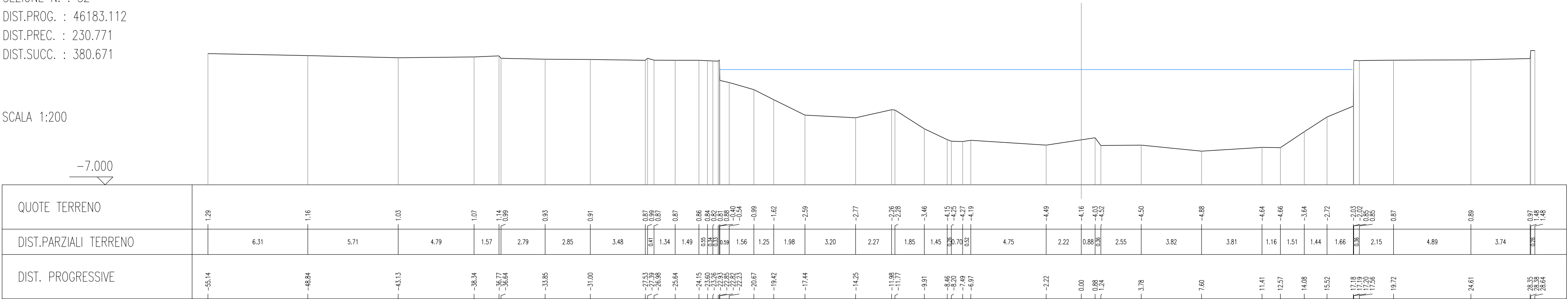
SEZIONE N. : S3
DIST.PROG. : 45952.341
DIST.PREC. : 311.925
DIST.SUCC. : 230.771

SCALA 1:200



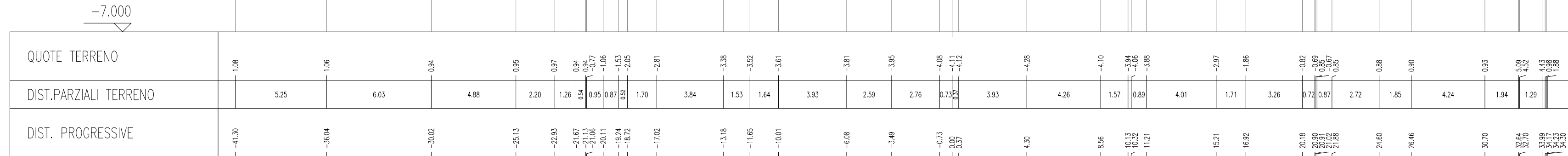
SEZIONE N. : S2
DIST.PROG. : 46183.112
DIST.PREC. : 230.771
DIST.SUCC. : 380.671

SCALA 1:200



SEZIONE N. : PE0430f
DIST.PROG. : 46563.783
DIST.PREC. : 380.671
DIST.SUCC. : 528.892

SCALA 1:200



SEZIONE N. : PE0440f
DIST.PROG. : 47092.675
DIST.PREC. : 528.892

SCALA 1:200

